



I-49 Inner City Connector  
c/o PROVIDENCE  
1201 Main Street  
Baton Rouge, LA 70802

# I-49 Inner City Connector Newsletter

State Project No. 700-09-0171

## I-49 Inner City Connector

### OPPORTUNITIES FOR YOUR INPUT

Your participation is vital to ensuring that decisions on the proposed project reflect the needs of the people affected by the project. There are several ways to be informed and heard. If you have questions, comments or concerns, or want to be placed on the I-49 Inner City Connector mailing list, you can do one of the following:

Visit the Website @: <http://www.i49shreveport.com> Call: (225) 766-7400 Email: [i49innerconnector@providenceeng.com](mailto:i49innerconnector@providenceeng.com)

✉ Write to:

Comments :

I-49 Inner City Connector  
c/o PROVIDENCE  
1201 Main Street  
Baton Rouge, LA 70802

Name: \_\_\_\_\_

Address: \_\_\_\_\_

Daytime Phone: \_\_\_\_\_

Evening Phone: \_\_\_\_\_

e-mail address: \_\_\_\_\_

---

---

---

---

---

---

---

---

---

---





# I-49 Inner City Connector Newsletter

State Project No. 700-09-0171

August 2009

Volume 1, Number 2  
Page 1 of 3

## INTRODUCTION

This newsletter provides information for engineering and environmental studies regarding the I-49 Inner City Connector project sponsored by the Northwest Louisiana Council of Governments (NLCOG).

We have initiated and will continue, over the next several months, conducting a Stage 0 Feasibility Study and Environmental Inventory for the I-49 Inner City Connector project. This study includes identifying the initial project concept, potential alternatives, and conducting a preliminary environmental review.

The first issue of the newsletter described the scope of the project, the Stage 0 process, project evaluation efforts, and how the public can be involved in the study.

The project website <http://www.i49shreveport.com> is up and running. Please visit it often for the most up to date information and/or to leave your comments. Maps will be added as alternatives are developed.

## In This Issue

Introduction.....	1
I-49 Goals & Objectives.....	1
Current Status.....	1
Public Meetings.....	2
Project Team.....	2
Project Area Map.....	3

## I-49 OBJECTIVES

Development of an interstate connector facility that will link downtown Shreveport at the current terminus of I-49 at I-20 with I-220, the southern terminus of proposed I-49 North.

## I-49 GOALS

- Provide Connectivity
  - Improve Safety
    - Provide Alternate Route
      - Economic Development
      - Assure Public
- Least disruption to local, business, and through traffic during construction
- Least impacts to the natural and human environment
- Best access for local and business traffic in the completed project

Input

## CURRENT STATUS OF THE PROJECT

	• Development of Public Involvement Plan
	• Development of Interagency Involvement Plan
STEP 1 →	• Define Study Area
	• Preliminary Data Collection
	• Scoping Meetings
CURRENT STEP →	• Traffic Studies
	• Refinement of Purpose and Need
	• Development of Preliminary Alternatives
	• Selection of Alternatives for Detailed Study
STEP 3 →	• Field Studies
	• Evaluation of Alternatives and Technical Reports
	• Environmental Documentation





# I-49 Inner City Connector Newsletter

State Project No. 700-09-0171

August 2009

Volume 1, Number 2

Page 2 of 3

- |          |  |
|----------|--|
| STEP 4 → | <ul style="list-style-type: none"> <li>Draft Environmental Inventory</li> <li>Utilities and Cost Analysis</li> <li>Public Meeting</li> </ul>   |
| STEP 5 → | <ul style="list-style-type: none"> <li>Review Comments on the Environmental Inventory</li> <li>Recommend Two Preferred Alternatives</li> <li>Final Environmental Inventory</li> <li>Project Implementation Plan</li> </ul> |

## PUBLIC MEETINGS

### Fall 2009

#### Community Input Meetings II: Connector Alternatives

Thursday, September 24, 2009  
6 pm

Location: Louisiana Technical College/VoTech

Friday, September 25, 2009  
Noon

Location: Artspace

Saturday, September 26, 2009  
10 am

Location: JS Clark Middle School

A series of six Community Input Meetings were held in June 2009. Attendees participated in an exercise to assist in the development of a corridor within which to consider the development of alternatives.

A second round of Community Input Meetings are being scheduled for September 2009 to present corridor options and design alternatives, and obtain feedback on those alternatives.

At the conclusion of the Stage 0 project, a meeting will be held to receive final public comment to be included in the feasibility study. This meeting is anticipated in the first quarter of 2010.

All interested members of the public are encouraged to attend these events.

Stay tuned to <http://www.i49shreveport.com> for the latest on dates, times and locations of meetings.

## PROJECT TEAM

### NTB and Associates

Public Participation  
Design Criteria  
Concept Development and Evaluation

### Franklin Industries, LLC

Community, Public, Government  
and Media Relations  
Community Outreach

### PROVIDENCE

Project Management  
Engineering  
Planning

Preliminary  
Environmental

**NLCOG**  
Project Sponsor

**LDOTD & FHWA**  
Courtesy Review

### ABMB Engineers

Traffic Engineering and Modeling  
Intersection and Corridor Analysis  
Highway and Bridge Design

### Earth Search

Cultural Resources Management





# I-49 Inner City Connector Newsletter

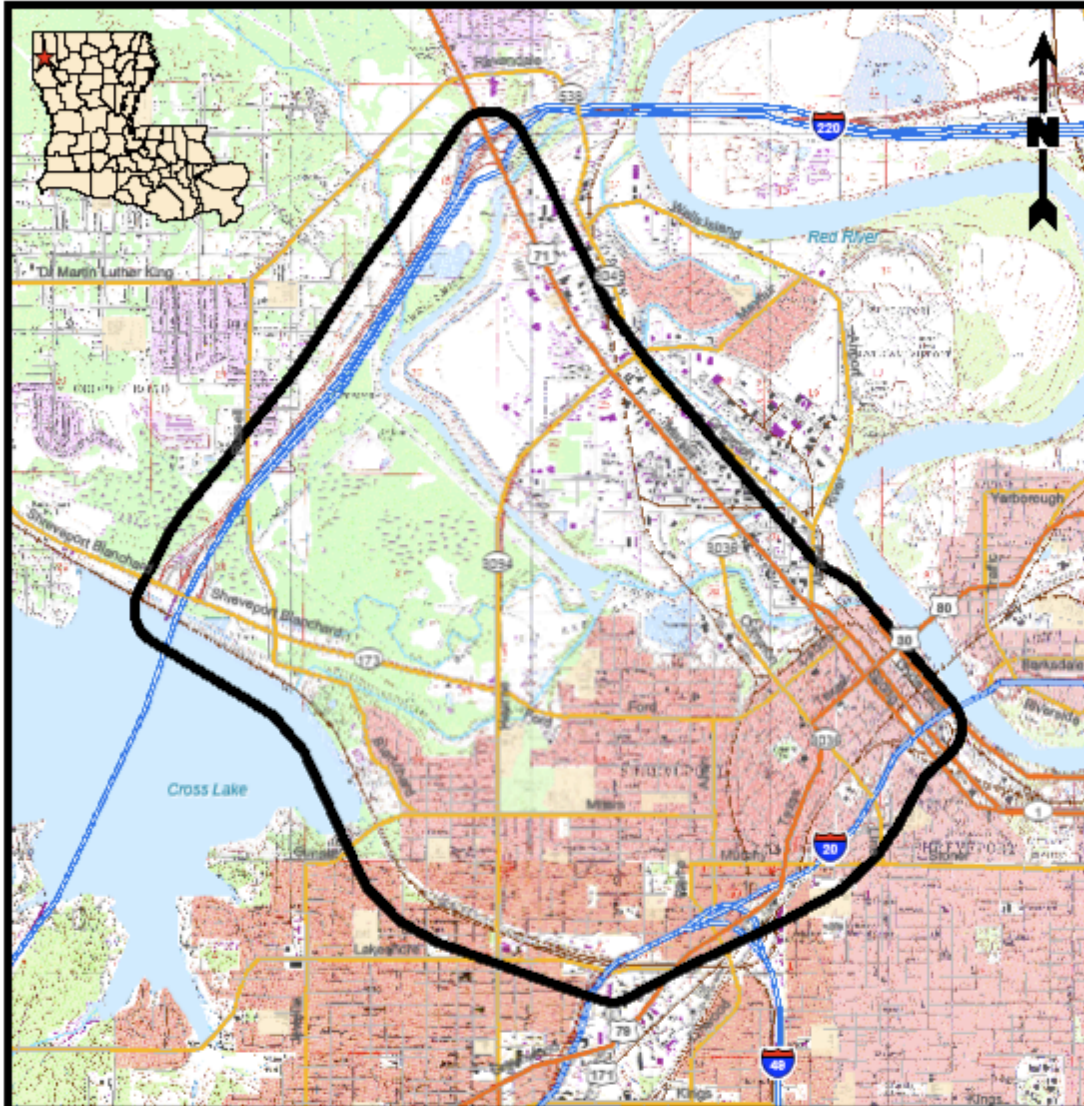
State Project No. 700-09-0171

August 2009

Volume 1, Number 2


Page 3 of 3

## PROJECT AREA



0.75 0.375 0 0.75  
Miles

### Legend

 Project Study Area

### Reference

Base map comprised of U.S.G.S. 7.5 minute topographic maps, "Bossier City, LA" dated 1975, "North Highlands, LA", "Shreveport East, LA", and "Shreveport West, LA" dated 1980 revised 1992.

### Project Study Area

I-49 Inner City Connector Project  
Shreveport, Caddo Parish, Louisiana

Northwest Louisiana  
Council of Governments



Drawn By	DRA	04/22/09
----------	-----	----------

Checked By	LMH	04/22/09
------------	-----	----------

Approved By	PACGP	05/04/09
-------------	-------	----------

Project Number	489-001
----------------	---------

Drawing Number	489-001-A001
----------------	--------------

Figure	1
--------	---