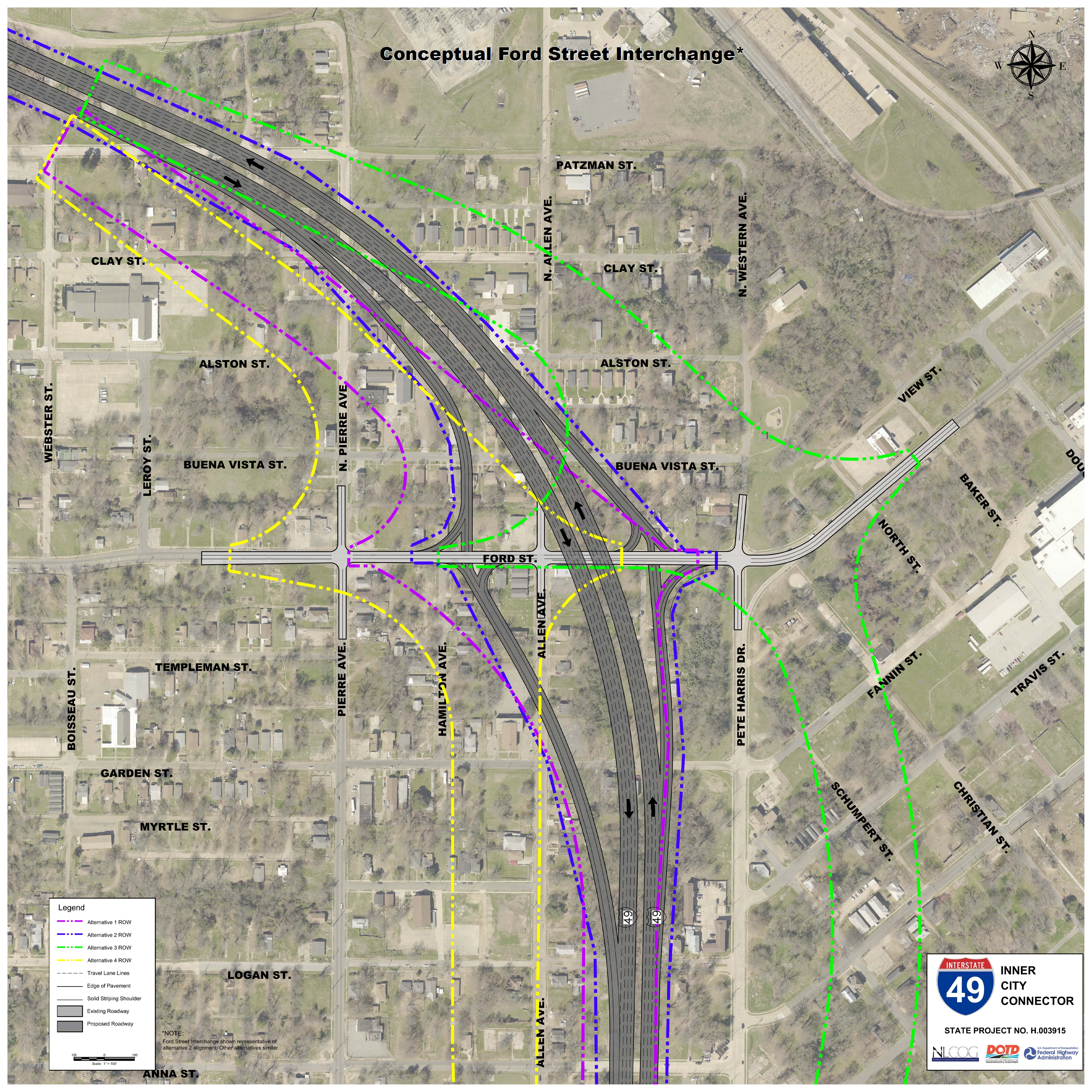


Conceptual Ford Street Interchange*



Legend

- Alternative 1 ROW
- Alternative 2 ROW
- Alternative 3 ROW
- Alternative 4 ROW
- Travel Lane Lines
- Edge of Pavement
- Solid Striping Shoulder
- Existing Roadway
- Proposed Roadway

Scale: 1" = 100'

NOTE:
Ford Street Interchange shown representative of alternative 2 alignment. Other alternatives similar.

INTERSTATE 49 INNER CITY CONNECTOR

STATE PROJECT NO. H.003915

NLCOG DOT U.S. Department of Transportation Federal Highway Administration