



I-49 Inner City Connector  
 c/o PROVIDENCE  
 1201 Main Street  
 Baton Rouge, LA 70802

# I-49 Inner City Connector Newsletter

State Project No. 700-09-0171

## I-49 Inner City Connector

### OPPORTUNITIES FOR YOUR INPUT

Your participation is vital to ensuring that decisions on the proposed project reflect the needs of the people affected by the project. There are several ways to be informed and heard. If you have questions, comments or concerns, or want to be placed on the I-49 Inner City Connector mailing list, you can do one of the following:

Visit the Website @: <http://www.i49shreveport.com> Call: (225) 766-7400 Email: [i49innerconnector@providenceeng.com](mailto:i49innerconnector@providenceeng.com)

Write to:

Comments :

I-49 Inner City Connector  
 c/o PROVIDENCE  
 1201 Main Street  
 Baton Rouge, LA 70802

---

---

---

---

---

---

---

---

---

---

---

---

Name: \_\_\_\_\_

Address: \_\_\_\_\_

Daytime Phone: \_\_\_\_\_

Evening Phone: \_\_\_\_\_

e-mail address: \_\_\_\_\_





# I-49 Inner City Connector Newsletter

May 2009  
Volume 1, Number 1  
Page 1 of 3

State Project No. 700-09-0171

## INTRODUCTION

This newsletter provides an information source for engineering and environmental studies regarding the I-49 Inner City Connector project sponsored by the Northwest Louisiana Council of Governments (NLCOG).

Over the next several months, we will be conducting a Stage 0 Feasibility Study and Environmental Inventory for the I-49 Inner City Connector project. A Stage 0 Feasibility Study and Environmental Inventory study includes identifying the initial project concept, potential alternatives and conducting a preliminary environmental review. There will be additional environmental review under the Louisiana Department of Transportation and Development (LDOTD) Stage 1: Environmental Process prior to construction of any alternative.

At this time, limited data concerning the proposed project, I-49 Inner City Connector exists. This first issue of the newsletter describes the scope of the project, the Stage 0 process, project evaluation efforts, and how the public can be involved in the study.

The project website <http://www.i49shreveport.com> is currently under construction, but will be routinely updated. Please visit it often for the most up to date information and/or to leave your comments.

## I-49 GOALS

- Provide Connectivity
  - Improve Safety
  - Provide Alternate Route
    - Economic Development
    - Assure Public Input

## In This Issue

Introduction.....	1
I-49 Goals & Objectives.....	1
Steps In The NEPA Process.....	1
Stage 0 Process.....	2
Public Meetings.....	2
Project Team.....	2
Project Area Map.....	3

## I-49 OBJECTIVES

Development of an interstate connector facility that will link downtown Shreveport at the current terminus of I-49 at I-20 with I-220, the southern terminus of proposed I-49 North.

- Least disruption to local, business, and through traffic during construction
- Least impacts to the natural and human environment
- Best access for local and business traffic in the completed project

## PROJECT DEVELOPMENT PROCESS

What Process will NLCOG follow to study this project?

**Stage 0**

This project is currently in Stage "0". This is primarily a Feasibility Study and Environmental Inventory - 1.5 planning stage with preliminary environmental review. To years - The purpose of this process is to reach a show where we stand in the development of this project, decision regarding the project's feasibility, evaluate LDOTD's Stage 0 Project Development Process is outlined the financial and schedule implications of pursuing the below. Although this project has been studied in the past, it project and render a decision on whether the project has not been studied for a period of many years, and many should continue further through the project factors have changed, therefore it is necessary to begin development process. with Stage 0.



# I-49 Inner City Connector Newsletter

State Project No. 700-09-0171

May 2009

Volume 1, Number 1

Page 2 of 3

## STAGE 0 FEASIBILITY STUDY AND ENVIRONMENTAL INVENTORY PLANNING PROCESS

- CURRENT STEP** → **STEP 1** →
- Development of Public Involvement Plan
  - Development of Interagency Involvement Plan
  - Define Study Area
  - Preliminary Data Collection
  - Scoping Meetings
- 
- STEP 2** →
- Traffic Studies
  - Refinement of Purpose and Need
  - Development of Preliminary Alternatives
- 
- STEP 3** →
- Selection of Alternatives for Detailed Study
  - Field Studies
  - Evaluation of Alternatives and Technical Reports
  - Environmental Documentation
- 
- STEP 4** →
- Draft Environmental Inventory
  - Utilities and Cost Analysis
  - Public Meeting
- 
- STEP 5** →
- Review Comments on the Environmental Inventory
  - Recommend Two Preferred Alternatives
  - Final Environmental Inventory
  - Project Implementation Plan

## PUBLIC MEETINGS

The first step of the **Stage 0** process involves public input. A series of Community Input Meetings will be held in Summer 2009, which will offer the first community-wide input opportunities. Residents will be given the opportunity to actively participate in the planning of conceptual corridors and give input regarding the project as a whole. Information gathered during these sessions will be used to create possible design alternatives.

A series of Community Input Meetings will be held in Summer 2009, which will offer the first community-wide input opportunities. Residents will be given the opportunity to actively participate in the planning of conceptual corridors and give input regarding the project as a whole. Information gathered during these sessions will be used to create possible design alternatives.

### Summer 2009

Community Input Meetings I

A second round of Community Input Meetings will occur in Fall 2009 to present corridor options and design alternatives, and obtain feedback on those alternatives.

### Fall 2009

Community Input Meetings II:  
Connector Alternatives

At the conclusion of the Stage 0 project, a meeting will be held to receive final public comment to be included in the feasibility study.

Stay tuned to <http://www.i49shreveport.com> for the latest on dates, times and locations of meetings.

All interested members of the public are encouraged to attend these events.

## PROJECT TEAM

### NTB and Associates

Public Participation  
Design Criteria  
Concept Development and Evaluation

### PROVIDENCE

Project Management  
Planning

Preliminary Engineering  
Environmental

### ABMB Engineers

Traffic Engineering and Modeling  
Intersection and Corridor Analysis  
Highway and Bridge Design

### Franklin Industries, LLC

Community, Public, Government  
and Media Relations  
Community Outreach

### NLCOG

Project Sponsor

### LDOTD & FHWA

Courtesy Review

### Earth Search

Cultural Resources Management







# I-49 Inner City Connector Newsletter

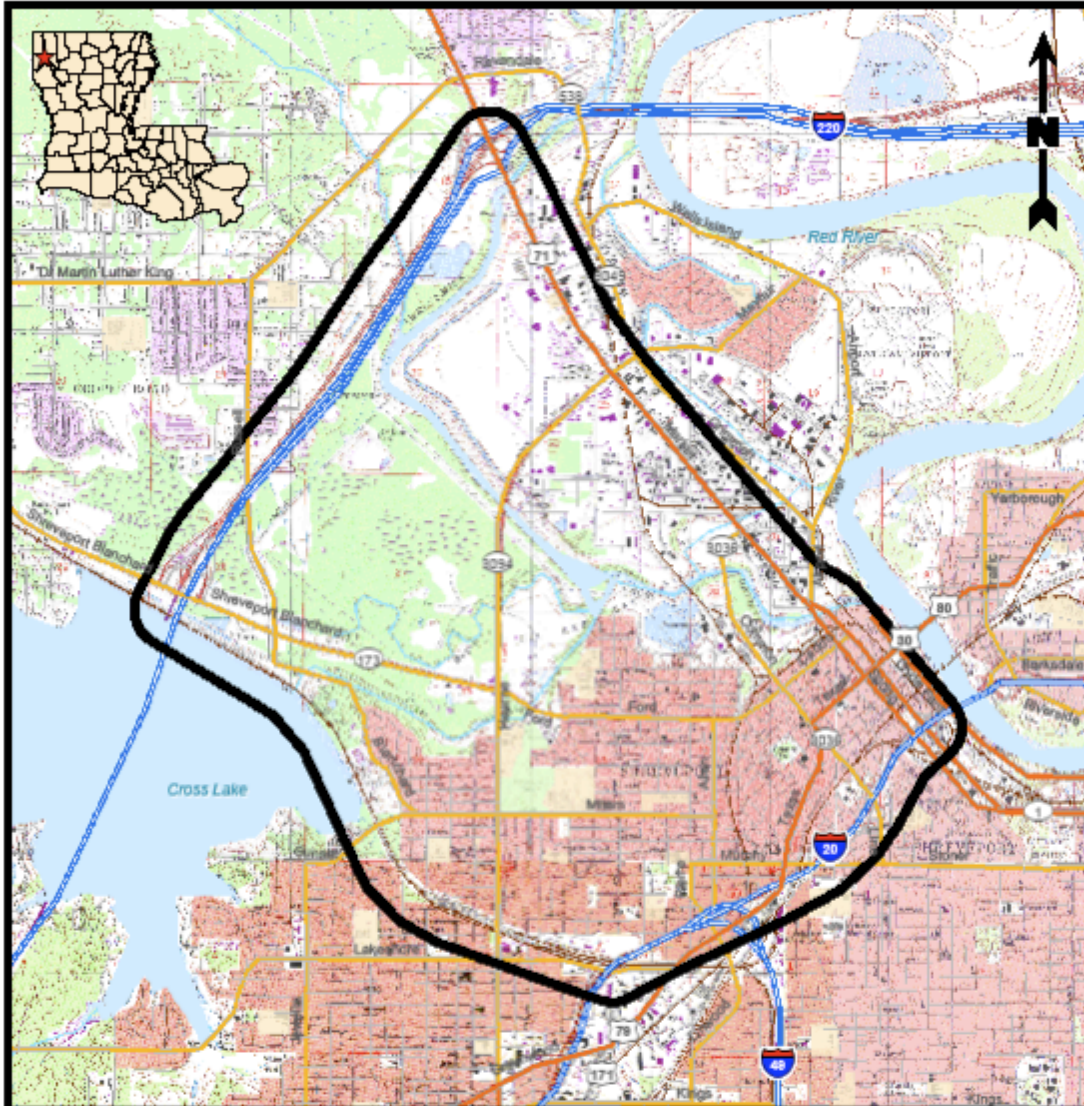
State Project No. 700-09-0171

May 2009

Volume 1, Number 1


Page 3 of 3

## PROJECT AREA



0.75 0.375 0 0.75  
Miles

### Legend

 Project Study Area

### Reference

Base map comprised of U.S.G.S. 7.5 minute topographic maps, "Bossier City, LA" dated 1975, "North Highlands, LA", "Shreveport East, LA", and "Shreveport West, LA" dated 1980 revised 1992.

### Project Study Area

I-49 Inner City Connector Project  
Shreveport, Caddo Parish, Louisiana

Northwest Louisiana  
Council of Governments



Drawn By	DRA	04/22/09
----------	-----	----------

Checked By	LMH	04/22/09
------------	-----	----------

Approved By	PACGP	05/04/09
-------------	-------	----------

Project Number	489-001
----------------	---------

Drawing Number	489-001-A001
----------------	--------------

Figure	1
--------	---